

MAJOR INITIATIVES OF THE GOVERNMENT

(This is not an exhaustive list)

Education Sector

- CM Punjab Laptop Program - **Rs. 6 Bn (cost Rs. 10 Bn)**
- Establishment of National University Murree - **Rs. 500 Mn (cost Rs. 1 Bn)**
- Chief Minister Punjab Schools Meal Program - **Rs. 500 Mn (cost Rs. 1 Bn)**
- Undergraduate Scholarship Program - **Rs. 2.5 Bn**
- New Initiatives for Imparting School Education through PEF - **Rs. 26.3 Bn**



Health Sector

- Establishment of Nawaz Sharif Institute of Cancer Treatment and Research, Lahore - **Rs. 6 Bn (cost Rs. 56 Bn)**
- Nawaz Sharif Institute of Cardiology, Sargodha - **Rs. 1 Bn (cost Rs. 8.8 Bn)**
- Provision of Ambulance Service for Motorways of Punjab - **Rs. 500 Mn**
- Revamping/Rehabilitation of BHUs/RHCs across Punjab - **Rs. 23.5 Bn (cost Rs. 55 Bn)**
- Upgradation/Rehabilitation of DHQs/THQs across Punjab - **Rs. 7.6 Bn (cost Rs. 87.2 Bn)**
- Revamping of Institute of Mental Health Lahore - **Rs. 1 Bn (cost Rs. 2 Bn)**
- Establishment of Cath Labs at Health Facilities (cost Rs. 2.4 Bn)



Sports & Youth Affairs

- Khelta Punjab - **Rs. 2 Bn (cost Rs. 7.5 Bn)**
- Rehabilitation of Existing Sports Facilities in Punjab - **Rs. 3 Bn (cost Rs. 6.9 Bn)**
- Provision of Sports Facilities across Punjab - **Rs. 425 Mn (cost Rs. 1.65 Bn)**
- CM Internship Program - **Rs. 1 Bn**



Digital Punjab

- Global IT Certifications Program - **Rs. 200 Mn (cost Rs. 560 Mn)**
- Punjab Dastak Program - **Rs. 100 Mn (cost Rs. 344 Mn)**
- Empowering Women by way of IT Training across Punjab - **Rs. 300 Mn (cost Rs. 1 Bn)**
- CM Free Wifi Initiative - **Rs. 230 Mn (cost Rs. 550 Mn)**



Transport and Roads Sector

- 630 new Eco-Friendly Buses & Construction of Bus Depots in Lahore, Multan, Rawalpindi, Bahawalpur, Faisalabad - **Rs. 15 Bn (cost Rs. 49.5 Bn)**
- Rehabilitation of Multan-Vehari Road: Length 93.5 Km - **Rs. 3 Bn (cost Rs. 13 Bn)**
- Roads Restoration Program - **Rs. 30 Bn (cost Rs. 135.6 Bn)**
- CM Road Rehabilitation Program - **Rs. 65.5 Bn (cost Rs. 439.8 Bn)**
- Rehabilitation of Faisalabad-Chiniot-Sargodha Road: Length 32.6 Km - **Rs. 3 Bn (cost Rs. 11 Bn)**



Security, Law & Order

- Smart Safe Cities Project in Different Cities of Punjab - **Rs. 3.6 Bn (cost Rs. 8.8 Bn)**
- Punjab Agriculture Food and Drug Authority - **Rs. 900 Mn**
- Construction of Police Stations/Pickets across Punjab - **Rs. 7.4 Bn (cost Rs. 24.5 Bn)**
- Provision of Missing Facilities in Jails across Punjab - **Rs. 3.7 Bn (cost Rs. 14.9 Bn)**



Agriculture Sector

- Chief Minister's Program for Solarization of Agriculture Tubewells in Punjab - **Rs. 2.5 Bn (cost Rs. 9 Bn)**
- Internship Scheme for Agriculture Graduates - **Rs. 1 Bn**
- Chief Minister's Punjab Green Tractor Program - **Rs. 30 Bn**
- Mechanization in Agriculture - **Rs. 4.8 Bn**
- Agricultural Inputs - **Rs. 4.9 Bn**



Finance Department
Government of the Punjab

☎ 9921 1082, 9921 2223 🌐 www.finance.punjab.gov.pk



Finance Department

HIGHLIGHTS OF THE BUDGET

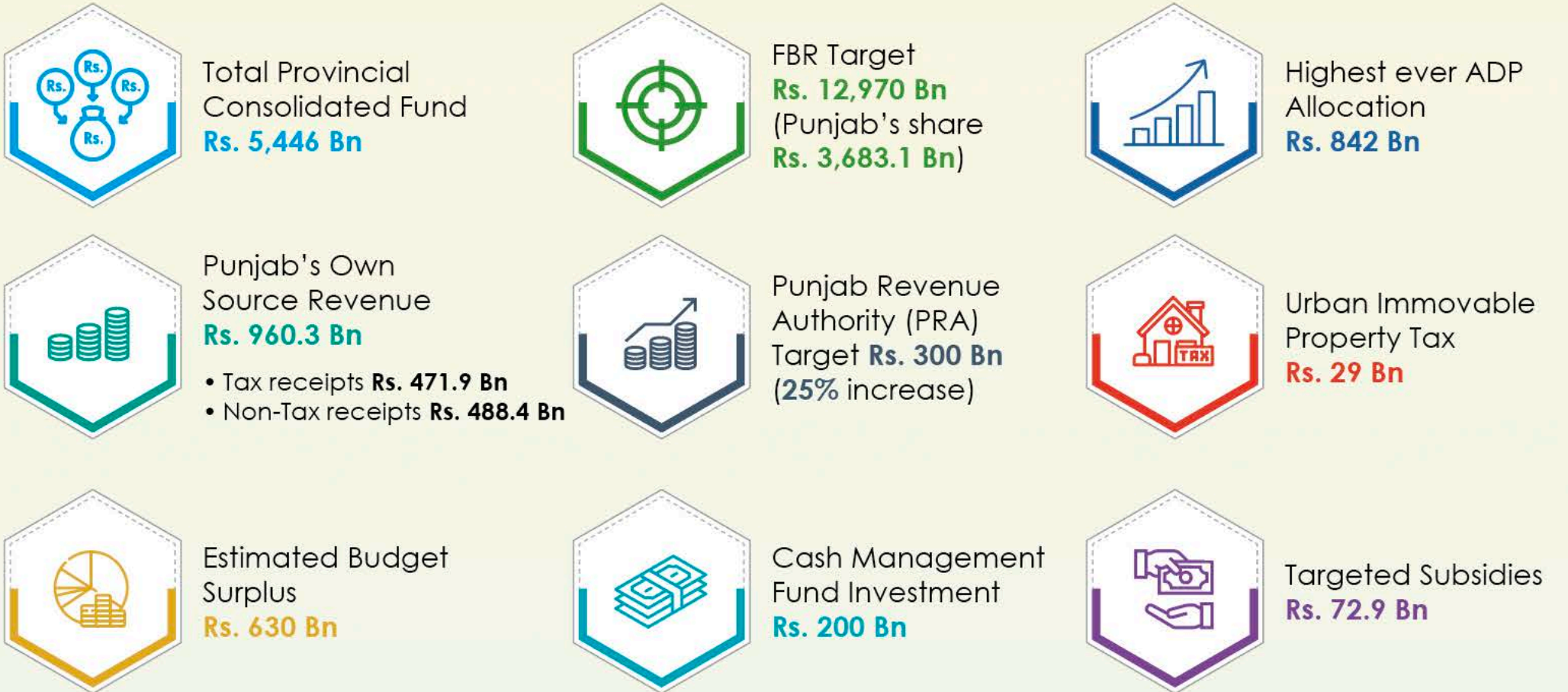
FY 2024-25



HEADLINES

- Total Budget Outlay FY 2024-25 is **Rs. 5,446 Bn**
- Development Budget for FY 2024-25 is **Rs. 842 Bn** up from **Rs. 655 Bn** in FY 2023-24 (**28.5%** increase). Foreign funded projects/programs **Rs. 161.3 Bn**
- Current and Service Delivery Budget is **Rs. 2,633.8 Bn** up from **Rs. 2,074 Bn** in FY 2023-24 (**27%** increase)
- Pro-Poor Social Protection Initiatives **Rs. 130 Bn**
- Food Account-II Outlay of **Rs. 468.9 Bn**
- Wheat Debt Retirement **Rs. 375 Bn**

SALIENT FEATURES OF THE BUDGET FY 2024-25



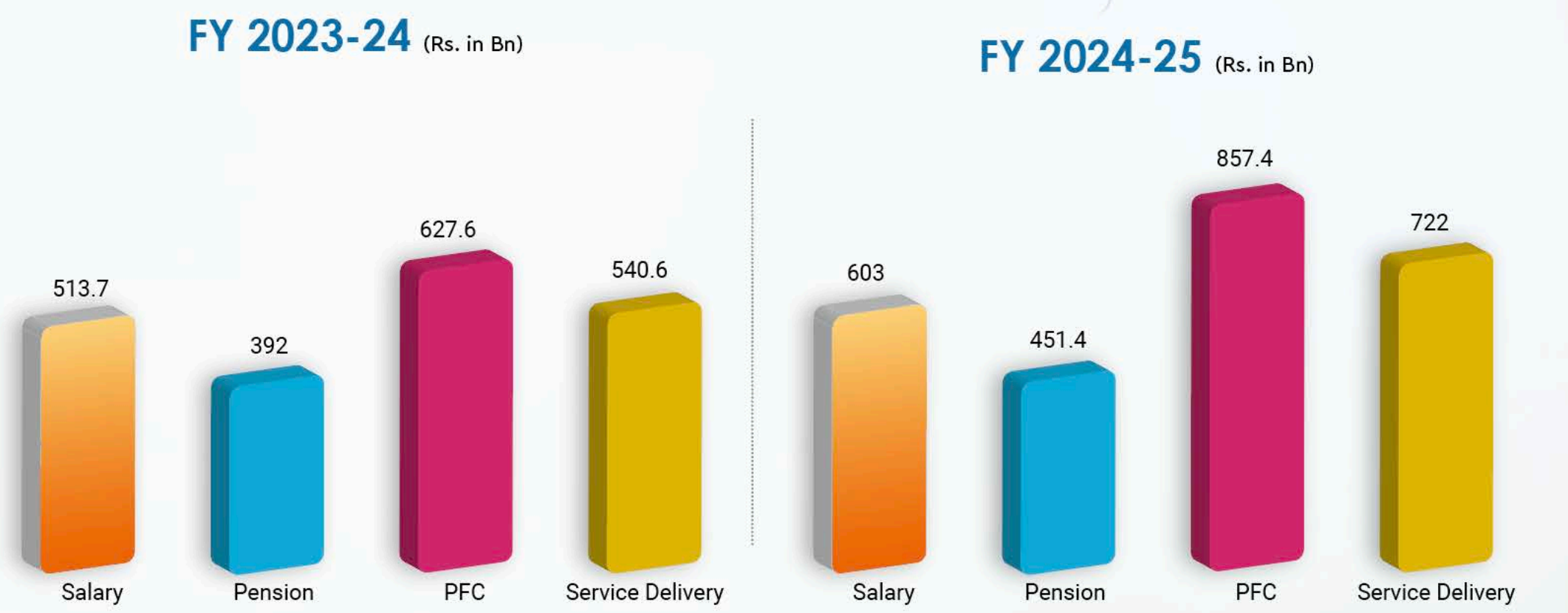
BUDGET SPOTLIGHTS FY 2024-25

- » Pro-Poor Targeted Social Protection Initiatives **Rs. 130 Bn**
 - » Solid Waste Management in Punjab **Rs. 120 Bn**
 - » CM Punjab Kissan Card **Rs. 10 Bn**
 - » CM Roshan Gharana Program **Rs. 4 Bn (cost Rs. 9.5 Bn)**
 - » Apni Chhat Apna Ghar **Rs. 5 Bn (cost Rs. 10 Bn)**
 - » Laptops for Students **Rs. 6 Bn (cost Rs. 10 Bn)**
 - » Ramzan Package **Rs. 35 Bn**
 - » Special Purpose Grants to MCs **Rs. 20 Bn**
 - » Punjab Enforcement Regulatory Authority (PERA) **Rs. 17 Bn**
 - » Road Restoration & Rehabilitation Program **Rs. 95.5 Bn**
- » Free Textbooks **Rs. 8.5 Bn**
 - » Climate Change **Rs. 22 Bn**
 - » PKLI Endowment Fund **Rs. 5 Bn**
 - » Allocation for Universities/HEC **Rs. 7.5 Bn**
 - » Punjab Family Planning Program **Rs. 3 Bn**
 - » Air Ambulance Service in Punjab **Rs. 452 Mn**
 - » 20,000 E-Bikes/P-Bikes **Rs. 1.9 Bn**
 - » Minority Development Fund **Rs. 2.5 Bn**
 - » CM Lahore Development Program **Rs. 35 Bn (cost Rs. 137 Bn)**
 - » CM Livestock Card **Rs. 2 Bn**

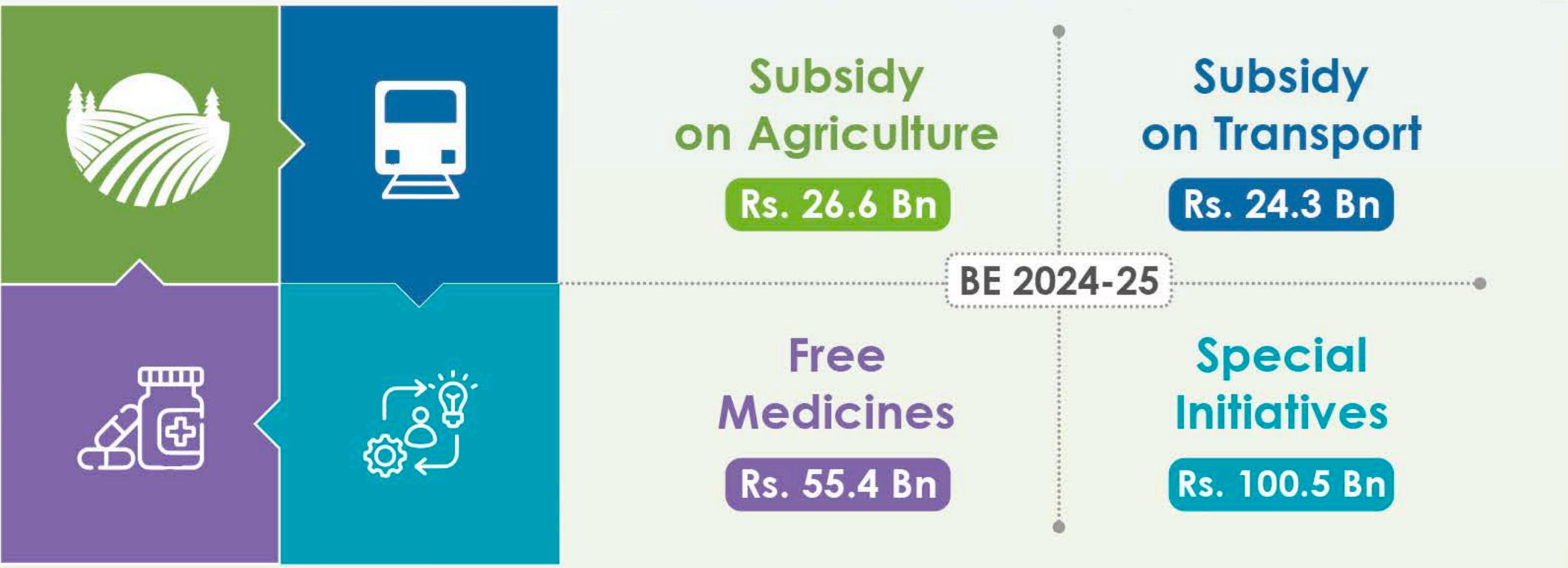
MAJOR INCREASE IN SECTORAL ALLOCATION IN FY 2024-25



CURRENT AND SERVICE DELIVERY BUDGET



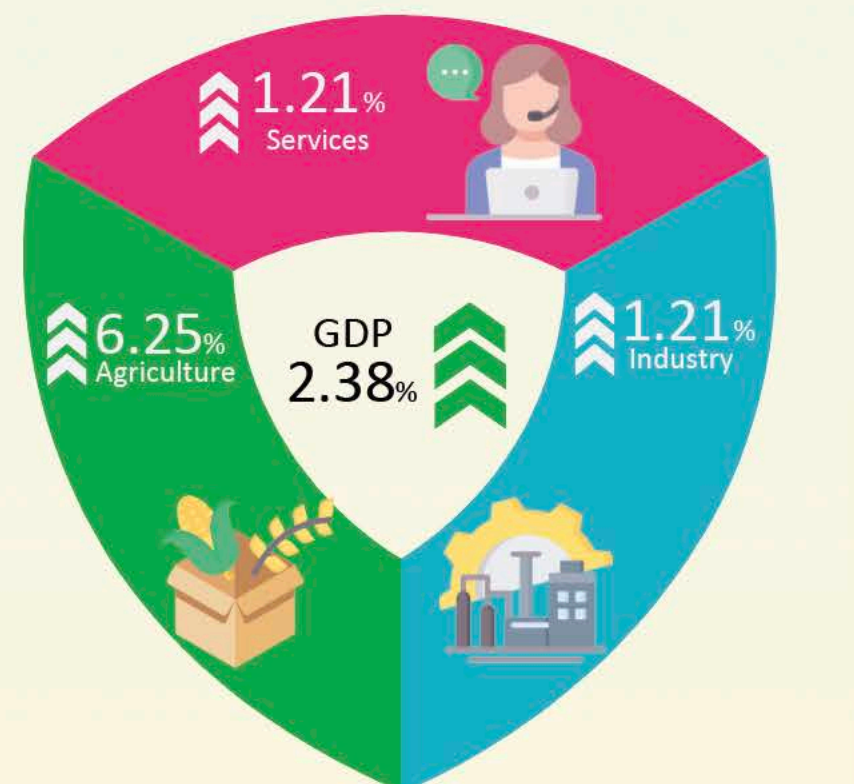
SUBSIDIES & RELIEF MEASURES (In PKR Bn)



PUNJAB OWN SOURCE REVENUE (TAX & NON-TAX) (In PKR Bn)

| Departments | BE 2023-24 | BE 2024-25 |
|--------------------|------------|------------|
| PRA | 240 | 300 |
| BOR | 99.2 | 105.2 |
| Excise & Taxation | 45.5 | 56.9 |
| Energy + Transport | 8.81 | 9.7 |
| Non-Tax | 231.8 | 488.4 |
| Total | 625.3 | 960.3 |

GROWTH PERFORMANCE FY 2023-24



MAJOR INITIATIVES OF THE GOVERNMENT (This is not an exhaustive list)

- Livestock & Fisheries Sector**

 - Foot and Mouth Disease Eradication Program across Punjab - **Rs. 4 Bn (cost Rs. 7.5 Bn)**
 - Aquaculture: Shrimp Farming in Punjab - **Rs. 3 Bn (cost Rs. 8 Bn)**
 - Establishment of Model Fish Market at Lahore - **Rs. 2 Bn (cost Rs. 5 Bn)**
 - Livestock Asset Transfer to Rural Women in South Punjab - **Rs. 1 Bn (Cost Rs. 2 Bn)**
- Energy Sector**

 - Solarization of Public Buildings - **Rs. 500 Mn**
 - CM Roshan Gharana Program - **Rs. 4 Bn (cost Rs. 9.5 Bn)**
 - Chief Minister Fund for Indigenization of Solar Panel Production - **Rs. 50 Mn (cost Rs. 500 Mn)**
 - Design and Construction of Net Zero Energy Building (**cost Rs. 7.2 Bn**)
- Urban Development**

 - Establishment of Safe City Girls' Hostel at Lahore- **Rs. 298 Mn (cost Rs. 398 Mn)**
 - Construction of Rawalpindi Ring Road from Banth to Thallan - **Rs. 1 Bn (cost Rs. 27 Bn)**
 - Punjab Cities Program - **Rs. 2.6 Bn (cost Rs. 3.1 Bn)**
 - Punjab Intermediate Cities Improvement Program - **Rs. 11.8 Bn (cost Rs. 62.3 Bn)**
- Climate Change**

 - Smog less & Climate Resilient Punjab - **Rs. 5 Bn (cost Rs. 10 Bn)**
 - CM Punjab Green Credit Program - **Rs. 500 Mn (cost Rs. 1 Bn)**
 - Enhanced Air Quality Monitoring System in Punjab - **Rs. 2.3 Bn (cost Rs. 5.2 Bn)**
 - Chief Minister's 'Plant for Pakistan' Initiative - **Rs. 1.8 Bn (cost Rs. 8 Bn)**
- Industries, Commerce & Investment**

 - Punjab Rozgar (**cost Rs. 10 Bn**)
 - CM Skill Development Initiatives (TEVTA) - **Rs. 150 Mn (cost Rs. 200 Mn)**
 - Establishment of Garment Cities in Punjab - **Rs. 1.5 Bn (cost Rs. 3 Bn)**
 - Resource Efficiency & Cleaner Production Investments in key Industrial Sectors - **Rs. 1.2 Bn (cost Rs. 2 Bn)**
- Social Welfare**

 - Himmat Card Program for Persons with Disabilities - **Rs. 2 Bn**
 - Establishment of Autism School at Lahore - **Rs. 350 Mn (cost Rs. 676 Mn)**
 - Establishment of Day Care Centres - **Rs. 500 Mn (cost Rs. 1 Bn)**
 - CM Nigheban Card for Destitute and Vulnerable - (**cost Rs. 1 Bn**)
 - CM Skill Development Program for Transgenders - **Rs. 500 Mn (cost Rs. 1 Bn)**
- Tourism**

 - Murree Development Program - **Rs. 5 Bn (cost Rs. 10 Bn)**
 - Eco Tourism at Changa Manga Wildlife Reserve - **Rs. 1 Bn (cost Rs. 1.5 Bn)**
 - Tourist Glass Train from Rawalpindi to Murree (Feasibility Study)- **Rs. 50 Mn (cost Rs. 100 Bn)**
 - Establishment of Eco Tourism Facility at Lal Suhanra National Park (Conservation of Desert Ecosystem) - **Rs. 500 Mn (cost Rs. 2 Bn)**